

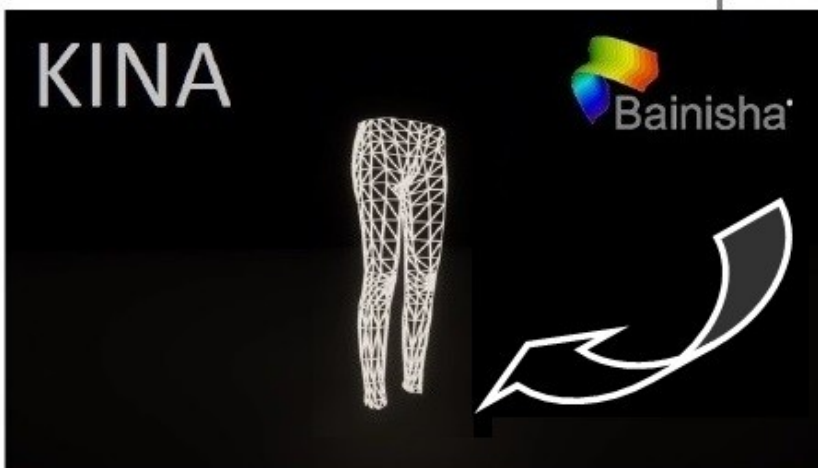
Fully adaptive wire frame activated by the smart clothing sensor network (Sensor Fusion System) to provide real-time data.

Wire frame adapts to wearer's morphology based on 3D snapshot

Different results can be send to a billboard or hand-held devices.

**KINA - Bainisha Smart Garment**

High Resolution Human Body Motion Capturing



Reg. Office Leeuwerikstraat 34  
Lokeren - B9160 - Belgium.  
Office Oosteindestraat 15A  
Lokeren - B9160 - Belgium  
Telephone: +32 (0)9 348 49 61  
Contact info@bainisha.com  
Website www.bainisha.com